



13 Fyneart Street

Cambusnethan, Wishaw, ML2 8PL

Offers over £100,000

NEW TO THE MARKET

A spacious and immaculate mid terraced property, positioned within a popular residential setting within Cambusnethan, Wishaw

Offering accommodation formed over two levels and comprises on the ground floor, entrance vestibule, a spacious bright lounge with floor to ceiling window offering an abundance of natural light and a stunning dining kitchen with centre island and host of integrated appliances to include gas hob, double electric oven, cooker hood, fridge freezer, washing machine and dishwasher

On the upper level are two double bedrooms (master with walk in wardrobe) and bathroom

The property further benefits from gas central heating, double glazing, front garden with pathway and level lawn, rear garden landscaped and enclosed, with gates for off road parking.

Fyneart Street is situated in Cambusnethan and a short drive from Newmains and Wishaw town centre with its many amenities and ideally situated for commuting to Glasgow, Edinburgh and the central belt via both the M8 and M74 motorway networks.

EPC C

Viewing

Please contact our Pomphreys Properties Ltd Office on 01698373365 if you wish to arrange a viewing appointment for this property or require further information.

- A Stunning Mid Terraced Property
- Gorgeous Dining Kitchen with Centre Island
- Two double Bedrooms
- Landscaped Gardens
- Enclosed Rear Garden with off road parking
- Host of integrated Appliances



2



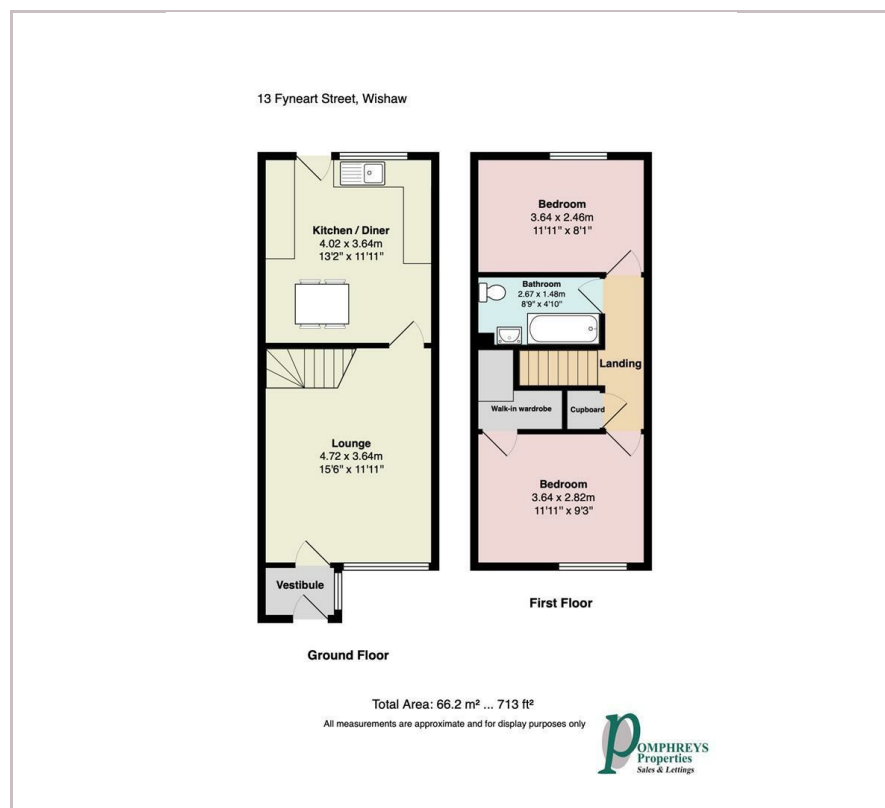
1



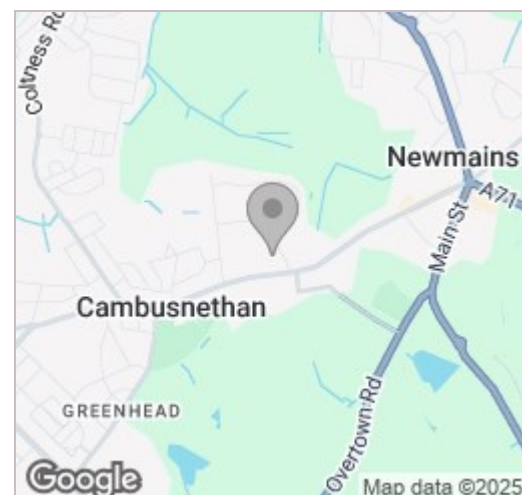
1



Floor Plan



Area Map



Energy Efficiency Graph



These particulars, whilst believed to be accurate are set out as a general outline only for guidance and do not constitute any part of an offer or contract. Intending purchasers should not rely on them as statements of representation of fact, but must satisfy themselves by inspection or otherwise as to their accuracy. No person in this firm's employment has the authority to make or give any representation or warranty in respect of the property.